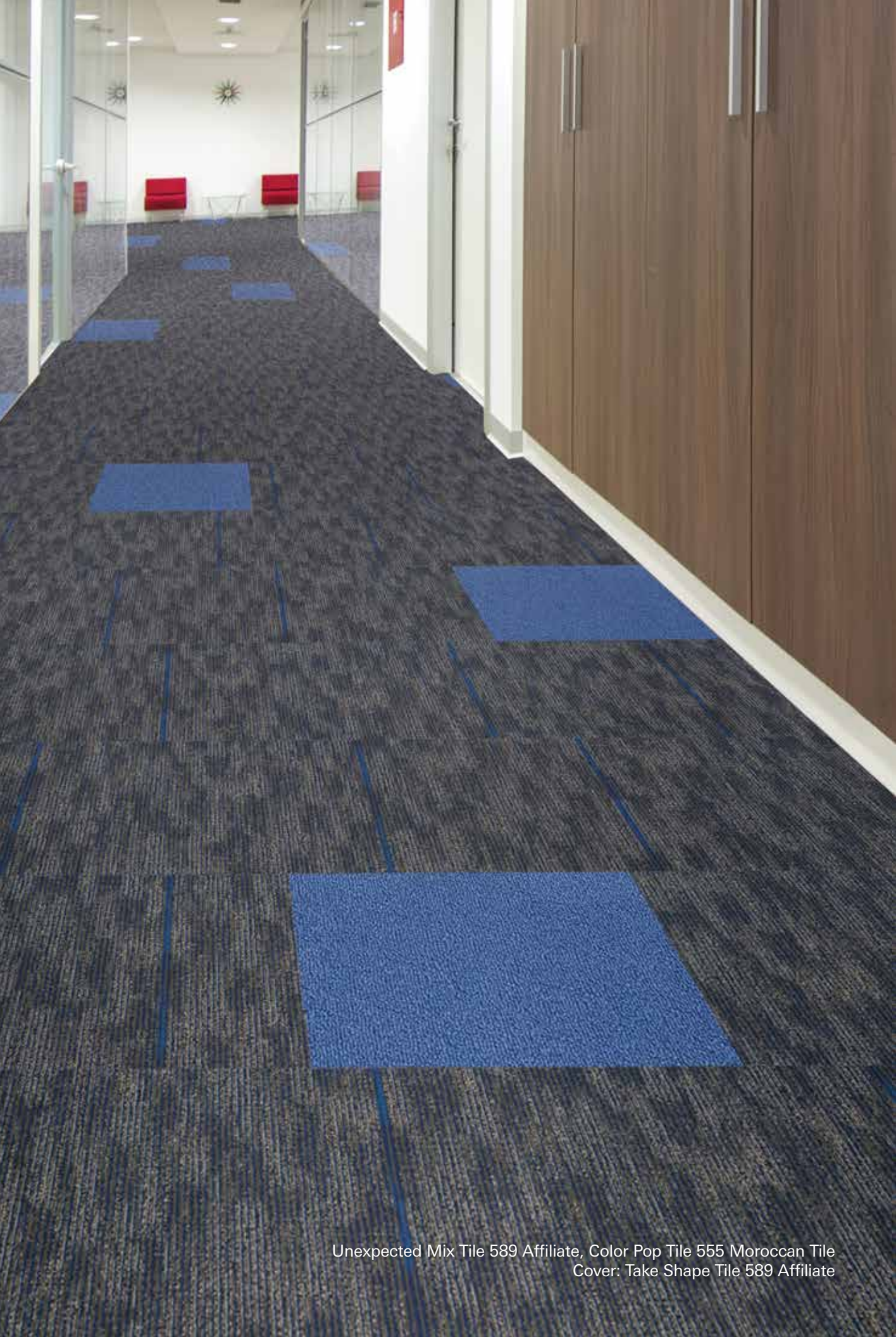


Interactive Collection

Take Shape Tile, Unexpected Mix Tile





Unexpected Mix Tile 589 Affiliate, Color Pop Tile 555 Moroccan Tile
Cover: Take Shape Tile 589 Affiliate



Take Shape Tile 979 League, Emergent 918 Abbey Stone



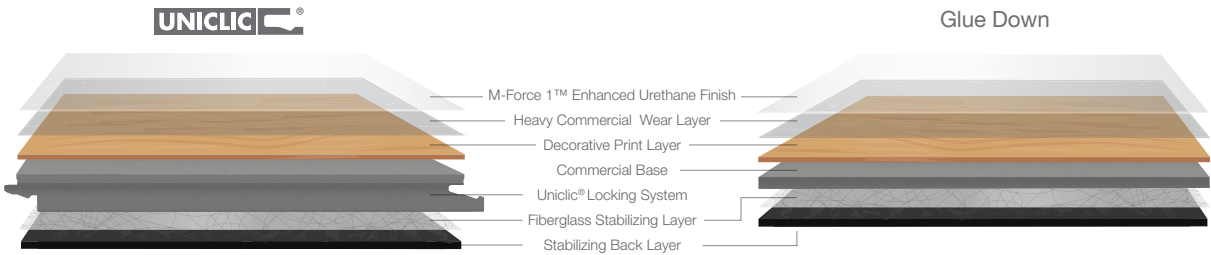
358 Split Rail

Emergent Collection

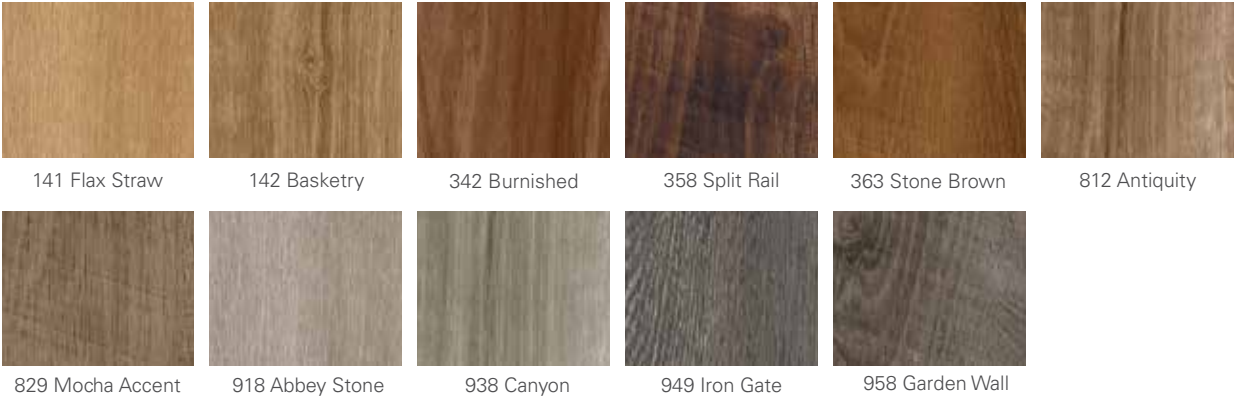
Proudly manufactured in America, Emergent LVT celebrates the vibrant, versatile spirit of our local communities. Appealing natural wood visuals are designed to fit any interior, providing a core collection of LVT styles to use for a variety of projects.

Features

- M-Force 1™ Enhanced Urethane finish and 20 mil wear layer protect against commercial traffic
- Wood textures emulate natural materials
- No polish maintenance reduces occupied costs
- Diverse color line spans from traditional to contemporary influences
- Designed to coordinate with a variety of Aladdin Commercial carpet collections
- 6" x 48" plank size
- Limited 10 Year Commercial Warranty
- Limited 25 Year Residential Warranty
- Made in America



Uniclic® is the premier locking system in the hard surface industry, reducing time and costs associated with installation of luxury vinyl tiles. Uniclic's special tongue and groove shape easily creates a tight connection between joints.



Color Pop Tile

Solid color textured loop available in 48 colors in 24" x 24" square tiles and select colors in 12" x 36" planks. Install as a border, inset or accent tile. No more than two tiles of the same color wide and quarter turn only.



121 Lemon Zest *



142 Ground Turmeric*



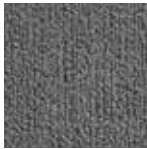
168 Mustard Seed*



252 Electric Orange*



258 Cajun Spice*



675 Cypress Grove



676 Zucchini*



352 Sundried Tomato*



353 Tango*



354 Mulled Wine*



374 Scarlet*



384 Aubergine*



717 Eggshell



721 Toasted Almond



453 Kaleidoscope*



483 Passion Purple*



529 Sterling Gray*



545 Kingfisher*



546 Jazz*



841 Tarnished Brass*



862 Tree Bark*



555 Moroccan Tile*



559 Hazy*



566 Aquatic*



575 Indigo Batik*



595 National Blue*



889 Peppercorn*



917 Chalk Dust*



629 Spanish Moss



631 Wheatgrass



641 Limeade*



646 Parakeet*



655 Calypso*



976 Brushed Metal*



985 Inkwell



863 Henna*



726 Jute



758 Malt*



833 Latte



678 Driftwood



686 Hemlock



699 Secret Garden



933 Lunar*



934 Stainless



964 Graphite*



866 Portabello*



883 Espresso*



996 Black Bean*

*Available in 12" x 36" planks

colorSTRAND®

SD NYLON

PERFORMANCE & DESIGN

- Wide variety of colors for excellent design flexibility
- Unsurpassed colorfastness to light and to atmospheric contaminants
- Excellent durability and longevity of color
- Resistant to harsh cleaning agents
- Mohawk Protection Plus Soil & Stain Resistant Technology

SUSTAINABILITY

- Contains an average of 40% pre-consumer recycled content
- CRI Green Label Plus® certified

WARRANTY

- Lifetime Limited Wear Warranty
- Lifetime Static Warranty
- Lifetime Limited Colorfastness To Light Warranty
- 10 Year Limited Colorfastness To Atmospheric Contaminants Warranty
- 10 Year Limited Stain Resistance Warranty

UltraSet®

UltraSet® is a premium vinyl carpet tile backing system containing a minimum of 39% recycled content. With over 20 years in the marketplace, its ultra dense construction is engineered to offer superior dimensional stability, high tuft bind that is resistant to edge ravel, and is impervious to moisture, while giving enhanced cushioning properties.

PERFORMANCE

- Unsurpassed dimensional stability - no growing or shrinking
- Constructed with an ultra dense five layer cushion backing system
- Carpet tiles are impervious to moisture damage from spills and water extraction cleaning
- Construction features superior tuft bind that is highly resistant to edge ravel
- Proven performance for over 20 years

INSTALLATION

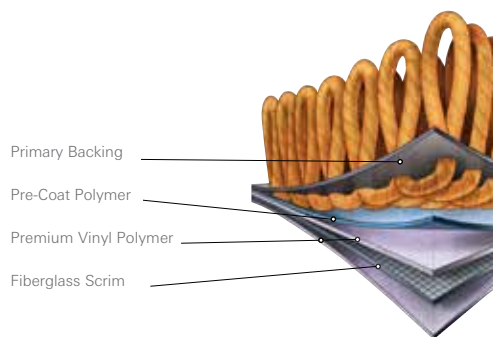
- Direct glue down installation
- Floating installation using FlexLok Tabs

SUSTAINABILITY

- Minimum of 39% pre-consumer recycle content by total weight
- Contributes to LEED credits
- CRI Green Label Plus certified
- NSF/ANSI 140 Gold Certified

WARRANTY

- Limited Lifetime Edge Ravel, Zippering, Delamination and Dimensional Stability Warranty



Specifications

CARPET TILE	Brand	Aladdin Commercial
	Collection	Interactive Tile
	Style Name / Number	Take Shape / ZB117
	Construction.....	Tufted
	Surface Appearance	Patterned Loop
	Gauge	1/12" (47.00 rows per 10 cm)
	Density	5,538
	Dye Method.....	100% Solution Dyed
	Fiber Type	Colorstrand® SD Nylon
	Stain Release Technology	Mohawk Protection Plus Stain
	Soil Release Technology.....	Mohawk Protection Plus Soil
	Primary Backing	Non Woven Synthetic
	Secondary Backing.....	UltraSet®
	Recycled Content	Contains 39% pre-consumer recycled content by total product weight
	Indoor Air Quality	Green Label Plus Certified # 1098
	NSF 140	Gold
	Size	24" x 24" (.6096 m x .6096 m)
	Installation Method	Quarter Turn / Vertical Ashlar / Brick Ashlar Monolithic / Multi-directional
	Flammability.....	ASTM E 648 Class 1 (Glue Down)
	Smoke Density.....	ASTM E 662 Less than 450
	Static Propensity	AATCC-134 Under 3.5 KV
	Warranties.....	Lifetime Limited Wear Warranty Lifetime Limited Static Protection Warranty Lifetime Limited Edge Ravel, Zippering, Delamination and Dimensional Stability Warranty Lifetime Limited Colorfastness to Light Warranty 10 Year Limited Stain Resistance Warranty 10 Year Limited Colorfastness to Atmospheric Contaminants

CARPET TILE	Brand	Aladdin Commercial
	Collection	Interactive Tile
	Style Name / Number	Unexpected Mix / ZB118
	Construction.....	Tufted
	Surface Appearance	Patterned Loop
	Gauge	1/12" (47.00 rows per 10 cm)
	Density	5,538
	Dye Method.....	100% Solution Dyed
	Fiber Type	Colorstrand® SD Nylon
	Stain Release Technology	Mohawk Protection Plus Stain
	Soil Release Technology.....	Mohawk Protection Plus Soil
	Primary Backing	Non Woven Synthetic
	Secondary Backing.....	UltraSet®
	Recycled Content	Contains 39% pre-consumer recycled content by total product weight
	Indoor Air Quality	Green Label Plus Certified # 1098
	NSF 140	Gold
	Size	24" x 24" (.6096 m x .6096 m)
	Installation Method	Quarter Turn / Vertical Ashlar / Brick Ashlar Monolithic / Multi-directional
	Flammability.....	ASTM E 648 Class 1 (Glue Down)
	Smoke Density.....	ASTM E 662 Less than 450
	Static Propensity	AATCC-134 Under 3.5 KV
	Warranties.....	Lifetime Limited Wear Warranty Lifetime Limited Static Protection Warranty Lifetime Limited Edge Ravel, Zippering, Delamination and Dimensional Stability Warranty Lifetime Limited Colorfastness to Light Warranty 10 Year Limited Stain Resistance Warranty 10 Year Limited Colorfastness to Atmospheric Contaminants

Installation Instructions:

Quarter Turn

Vertical Ashlar

Brick Ashlar

Monolithic

Multi-Directional

Mohawk Industries, Inc. warrants its adhesives for the life of the original installation only when a Mohawk Industries style (product) is installed. Mohawk's floor preparation procedures must be followed to ensure that the substrate has been prepared properly. Failure to use Mohawk Industries adhesives or to follow Mohawk's floor preparation procedures will void all lifetime adhesive warranties. Please contact your local Sales Representative for installation guidelines.

Mohawk is providing this architect folder for the purpose of promoting our commercial business. Color may vary from dye lot to dye lot. Substitution of material may be made due to improved technology, supply limitations or other factors. The performance of this product is not affected by such variations. We recommend the use of chair pads on all commercial installations.

For current and complete specifications please call tech support at 888-387-9881 or visit www.mohawkflooring.com 1 800.233.4490

