

# Rediscovery Collecton

Accede II Tile, Allocation II Tile, Design Medley II







The **Rediscovery Collection** works incredibly with Aladdin's Design Medley II and Color Pop, providing inviting visual warmth, with the benefit of mergeable dye lot patterns. Six earthen influenced colorways inject bold energy with accents that radiate and embrace the beauty of imperfections in nature. Allocation II reflects the raw linear veining and striations on weathered earth and rocks, while Accede II accentuates a raw fragmented geometric approach. Invigorate your workplace with unlimited applications, using these products designed to perform for any commercial setting.

Allocation II Tile 959, Brick Ashlar  
Cover: Accede II Tile 727, Brick Ashlar,











Create unique interiors with the mergeable carpet tiles of the **Rediscovery Collection**.

Designed intentionally so no two installations are alike, these styles have a progression of color and pattern making each commercial project have its own distinctive style.

- Able to install tiles from multiple dye lots
- Minimize need to purchase large quantities of attic stock
- Easy replacement of tiles at any time
- Readily available for future renovation or expansion
- Random/Multi-Directional install method recommended for optimal Results









Design Medley II 988, Brick Ashlar  
Walk All Over Tile 989





Walk All Over Tile

- Extends the life and appearance of interior floors.
- Traps excess moisture and dirt at the entrance.
- Enhanced safety against slip and falls.
- Decreased maintenance cost over time.

## WalkOff Entryway System

Walked in soil and moisture are the main causes of premature wear and eventual replacement of flooring interiors. Effective placement of Aladdin's walkoff carpet tiles can reduce the amount of soil and moisture entering a facility by up to 91%. This means lowered maintenance costs and extended life for all floor coverings beyond the entry.

### Performance Innovations:

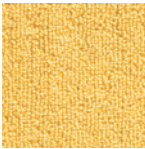
Aladdin's walkoff carpet tiles are designed specifically to protect facilities against excess dirt and moisture, all while providing enhanced safety with a non-slip surface in high moisture areas.

- Aladdin's walkoff carpet tile engineering provides a Class I fire rating - a key aspect when specifying carpet for retail and general public entryways.
- The use of heavy 'scraper' yarns provides for ideal soil removal and collection. Each square yard can hold up to 5.6 lbs. of sand. That's 2.4 times its normal weight.
- Aladdin's walkoff carpet tiles can be easily cleaned by vacuuming or extracting. You can also remove individual tiles for cleaning or to replace damaged areas.

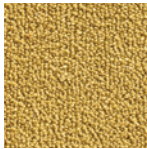


# Color Pop Tile

Solid color textured loop available in 48 colors in 24" x 24" square tiles and select colors in 12" x 36" planks. Install as a border, inset or accent tile. No more than two tiles of the same color wide and quarter turn only.



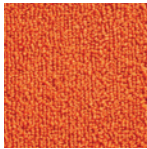
121 Lemon Zest \*



142 Ground Turmeric\*



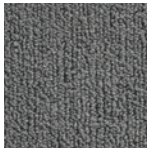
168 Mustard Seed\*



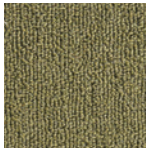
252 Electric Orange\*



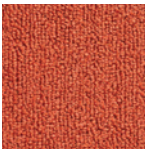
258 Cajun Spice\*



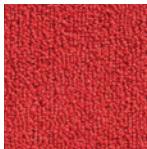
675 Cypress Grove



676 Zucchini\*



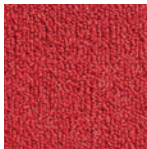
352 Sundried Tomato\*



353 Tango\*



354 Mulled Wine\*



374 Scarlet\*



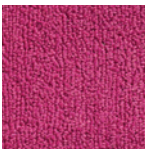
384 Aubergine\*



717 Eggshell



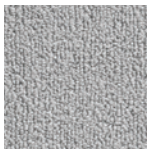
721 Toasted Almond



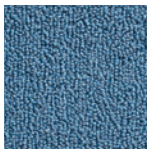
453 Kaleidoscope\*



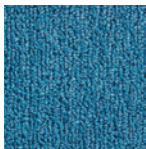
483 Passion Purple\*



529 Sterling Gray\*



545 Kingfisher\*



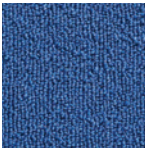
546 Jazz\*



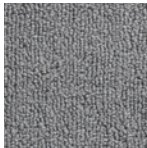
841 Tarnished Brass\*



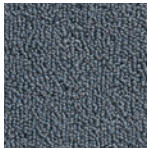
862 Tree Bark\*



555 Moroccan Tile\*



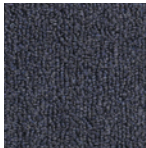
559 Hazy\*



566 Aquatic\*



575 Indigo Batik\*



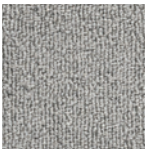
595 National Blue\*



889 Peppercorn\*



917 Chalk Dust\*



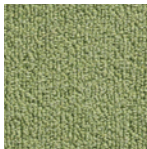
629 Spanish Moss



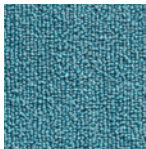
631 Wheatgrass



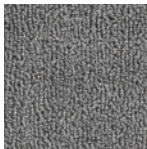
641 Limeade\*



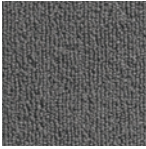
646 Parakeet\*



655 Calypso\*



976 Brushed Metal\*



985 Inkwell



863 Henna\*



726 Jute



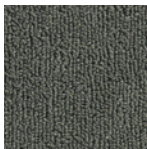
758 Malt\*



833 Latte



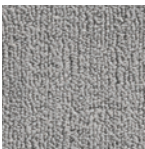
678 Driftwood



686 Hemlock



699 Secret Garden



933 Lunar\*



934 Stainless



964 Graphite\*



866 Portabello\*



883 Espresso\*



996 Black Bean\*

\*Available in 12" x 36" planks



# colorSTRAND®

## SD NYLON

### PERFORMANCE & DESIGN

- Wide variety of colors for excellent design flexibility
- Unsurpassed colorfastness to light and to atmospheric contaminants
- Excellent durability and longevity of color
- Resistant to harsh cleaning agents
- Mohawk Protection Plus Soil & Stain Resistant Technology

### SUSTAINABILITY

- Contains an average of 30% pre-consumer recycled content
- CRI Green Label Plus® certified

### WARRANTY

- Lifetime Limited Wear Warranty
- Lifetime Static Warranty
- Lifetime Limited Colorfastness To Light Warranty
- 10 Year Limited Colorfastness To Atmospheric Contaminants Warranty
- 10 Year Limited Stain Resistance Warranty

## UltraSet®

UltraSet is a premium vinyl carpet tile backing system containing a minimum of 50% recycled content. With over 20 years in the marketplace, its ultra dense construction is engineered to offer superior dimensional stability, high tuft bind that is resistant to edge ravel, and is impervious to moisture, while giving enhanced cushioning properties.

### PERFORMANCE

- Unsurpassed dimensional stability - no growing or shrinking
- Constructed with an ultra dense five layer cushion backing system
- Carpet tiles are impervious to moisture damage from spills and water extraction cleaning
- Construction features superior tuft bind that is highly resistant to edge ravel
- Proven performance for over 20 years

### INSTALLATION

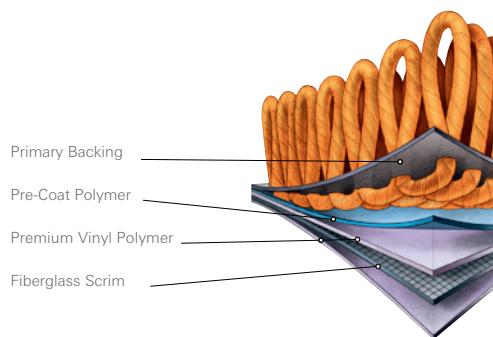
- Direct glue down installation
- Floating installation using FlexLok Tabs

### SUSTAINABILITY

- Minimum of 50% recycled content by total weight
- Contributes to LEED credits
- CRI Green Label Plus certified
- NSF/ANSI 140 Gold Certified

### WARRANTY

- Limited Lifetime Edge Ravel, Zippering, Delamination and Dimensional Stability Warranty



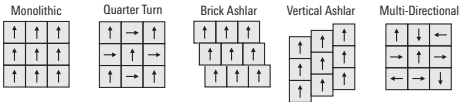


Specifications

CARPET TILE	Brand .....	Aladdin Commercial
	Collection .....	Rediscovery Collection
	Style Name / Number .....	Accede II Tile / 2B165
	Construction .....	Tufted
	Surface Appearance .....	Patterned Loop
	Gauge .....	1/12" (47.00 rows per 10 cm)
	Tufted Weight.....	22 oz/yd (624 g/m <sup>2</sup> )
	Density.....	7,920
	Dye Method.....	100% Solution Dyed
	Fiber Type .....	Colorstrand® SD Nylon
	Stain Release Technology ....	Mohawk Protection Plus Stain
	Soil Release Technology.....	Mohawk Protection Plus Soil
	Primary Backing .....	Non Woven Synthetic
	Secondary Backing.....	UltraSet®
	Indoor Air Quality .....	Green Label Plus Certified # 1098
	NSF 140 .....	Gold
	Size .....	24" x 24" (.6096 m x .6096 m)
	Yds./Ctn .....	8
	Installation Method.....	Monolithic / Vertical Ashlar / Brick Ashlar / Quarter Turn
	Flammability.....	ASTM E 648 Class 1 (Glue Down)
	Smoke Density.....	ASTM E 662 Less than 450
	Static Propensity .....	AATCC-134 Under 3.5 KV
	Warranties.....	Lifetime Limited Wear Warranty
		Lifetime Limited Static Protection Warranty
		Lifetime Limited Edge Ravel, Zippering, Delamination and Dimensional Stability Warranty
		Lifetime Limited Colorfastness to Light Warranty
		10 Year Limited Stain Resistance Warranty
		10 Year Limited Colorfastness to Atmospheric Contaminants

CARPET TILE	Brand .....	Aladdin Commercial
	Collection .....	Rediscovery Collection
	Style Name / Number .....	Design Medley II / 2B137
	Construction .....	Tufted
	Surface Appearance.....	Textured Patterned Loop
	Gauge .....	1/12" (47.00 rows per 10 cm)
	Tufted Weight.....	22 oz/yd (624 g/m <sup>2</sup> )
	Density.....	9,000
	Dye Method.....	100% Solution Dyed
	Fiber Type .....	Colorstrand® SD Nylon
	Stain Release Technology ....	Sentry Plus Stain Protection
	Soil Release Technology.....	Sentry Soil Protection
	Primary Backing .....	Non Woven Synthetic
	Secondary Backing.....	UltraSet®
	Indoor Air Quality .....	Green Label Plus Certified # 1098
	NSF 140 .....	Gold
	Size .....	24" x 24" (.6096 m x .6096 m)
	Yds./Ctn .....	8
	Installation Method.....	Monolithic / Vertical Ashlar / Brick Ashlar / Quarter Turn / Multi-Directional
	Flammability.....	ASTM E 648 Class 1 (Glue Down)
	Smoke Density.....	ASTM E 662 Less than 450
	Static Propensity .....	AATCC-134 Under 3.5 KV
	Warranties.....	Lifetime Limited Wear Warranty
		Lifetime Limited Static Protection Warranty
		Lifetime Limited Edge Ravel, Zippering, Delamination and Dimensional Stability Warranty
		Lifetime Limited Colorfastness to Light Warranty
		10 Year Limited Stain Resistance Warranty
		10 Year Limited Colorfastness to Atmospheric Contaminants

Installation Instructions:



Note: Multi-Directional Install method only approved for use with Design Medley II Tile

Mohawk Industries, Inc. warrants its adhesives for the life of the original installation only when a Mohawk Industries style (product) is installed. Mohawk's floor preparation procedures must be followed to ensure that the substrate has been prepared properly. Failure to use Mohawk Industries adhesives or to follow Mohawk's floor preparation procedures will void all lifetime adhesive warranties. Please contact your local Sales Representative for installation guidelines.

Mohawk is providing this architect folder for the purpose of promoting our commercial business. Color may vary from dye lot to dye lot. Substitution of material may be made due to improved technology, supply limitations or other factors. The performance of this product is not affected by such variations. We recommend the use of chair pads on all commercial installations.

For current and complete specifications please call tech support at 888-387-9881 or visit [www.mohawkflooring.com](http://www.mohawkflooring.com) | 800.233.4490