

Grass Valley Collection





9211 White Pine
Cover: 9817 Flint, 941 Warm Gray







9211 White Pine

Grass Valley Collection

Redefining the norm of mixing different materials and styles, Grass Valley offers 11 types of wood mixed with 3 stones. Created with deconstructivism in mind, this collection offers freedom of form and endless opportunities for unique artistic expression.

Features:

- 2.5 mm and 4.2 mm overall thickness
- 8" x 48" wood planks and 12" x 24" stone tiles
- 12 and 20 mil wear layer
- M-Force™ 1 Enhanced Urethane Finish
- FloorScore® Certified
- 10 Year Limited Commercial Warranty
- 25 Year Limited Residential Warranty
- Made in America



4913 Dark Greige



872 Toasted Oak



9817 Flint



9411 Gray Mahogany



938 Good Gray



1843 Sienna Walnut



1714 Natural Mahogany



1357 Natural Cherry



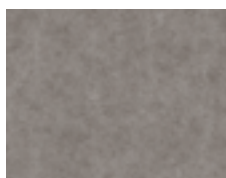
32232 Natural Oak



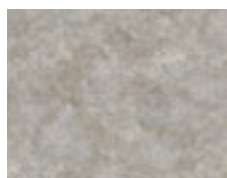
9140 Silver Oak



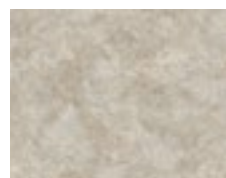
9211 White Pine



9112 Gray Matter



941 Warm Gray



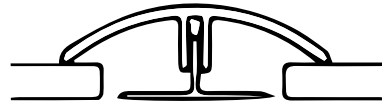
358 Stippled Gray

Mohawk Transitions

The Mohawk transitions moisture resistant molding provides the functionality of a T-Molding and Reducer in a single, easy to install, piece. The unique flexible zone design of the Mohawk transitions track allows installation of the profile on either direction, thus eliminating the guess work out of positioning the trim.

METHOD 1: T-MOLDING

As a T-Molding transition, Mohawk transitions are designed to accommodate the expansion gap between floors of equal heights, ranging in thickness from 3-8mm.



METHOD 2: REDUCER

As a Reducer transition, Mohawk transitions are designed to accommodate the expansion gap between floors of unequal heights, ranging in thickness from 3-8mm.



SPECIFICATIONS

- Dimensions: 78.75 inches in length by 1.75 inches in width
- Core material: PVC
- Surface material: highly wear resistant rigid PVC
- Primary applications: Luxury Vinyl Flooring
- Patent pending

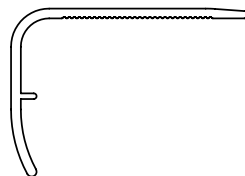
Grass Valley	T-Molding & Reducer 2-in-1 Transition
Color #	Style/Color #
358 Stripped Gray	A2IN1-03602
872 Toasted Oak	A2IN1-03711
938 Good Gray	A2IN1-03687
941 Warm Gray	A2IN1-03600
1357 Natural Cherry	A2IN1-03739
1714 Natural Mahogany	A2IN1-03609
1843 Sienna Walnut	A2IN1-03740
4913 Dark Greige	A2IN1-03711
9112 Gray Matter	A2IN1-03744
9140 Silver Oak	A2IN1-03688
9211 White Pine	A2IN1-03742
9411 Gray Mahogany	A2IN1-03743
9817 Flint	A2IN1-02878
32232 Natural Oak	A2IN1-03741

Mohawk Stairnose

The Mohawk stairnose is a moisture resistant molding that is suitable to finish stair installations of LVT. Designed for functionality, versatility, and uniqueness, it can be installed either flush or overlapped. Ranging from 2mm in thickness to 7.5mm, the Mohawk stairnose can accommodate bull-nosed and squared-nosed stair installations.

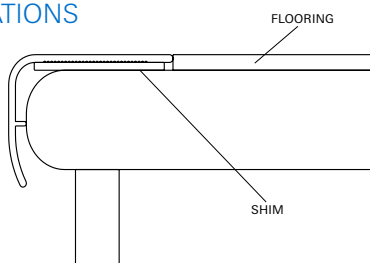
TRIM SPECIFICATIONS

- Selling Style: AVSNP
- Dimensions: 78.75" x 1.88" x 1.33"
- Core material: PVC
- Surface material: highly wear resistant rigid PVC
- ADA compliant



STAIRNOSE SHIM SPECIFICATIONS

- Selling Style: ASHIM
- Dimensions: 78.75" x 1.25"
- Shim thickness is specific to the LVT thickness



Grass Valley	Stairnose
Color #	Style/Color #
358 Stripped Gray	AVSNP-03602
872 Toasted Oak	AVSNP-03711
938 Good Gray	AVSNP-03687
941 Warm Gray	AVSNP-03600
1357 Natural Cherry	AVSNP-03739
1714 Natural Mahogany	AVSNP-03609
1843 Sienna Walnut	AVSNP-03740
4913 Dark Greige	AVSNP-03711
9112 Gray Matter	AVSNP-03744
9140 Silver Oak	AVSNP-03688
9211 White Pine	AVSNP-03742
9411 Gray Mahogany	AVSNP-03743
9817 Flint	AVSNP-02878
32232 Natural Oak	AVSNP-03741

Specifications

LVT	<table border="0"> <tr><td>Brand</td><td>Aladdin Commercial</td></tr> <tr><td>Style Name / Number</td><td>Grass Valley Clic / AH014</td></tr> <tr><td>Product Type</td><td>Commercial Grade Luxury Vinyl Tile (Clic)</td></tr> <tr><td>Overall Gauge</td><td>4.2mm</td></tr> <tr><td>Wear Layer</td><td>12 mil (0.3mm)</td></tr> <tr><td>Finish</td><td>M-Force™ 1 Enhanced Urethane</td></tr> <tr><td>Colors Available</td><td>14</td></tr> <tr><td>Size</td><td>8" x 48" (203.2mm x 1,219.2mm) 12" x 24" (304.8mm x 609.6mm)</td></tr> <tr><td>Packaging</td><td>8" x 48" 18.22 sf/ctn; 60 ctns/pallet; 432.11 oz/ctn 12" x 24" 19.58 sf/ctn; 65 ctns/pallet; 460 oz/ctn</td></tr> <tr><td>Classification</td><td>ASTM F1700 - Class III, Type A - Smooth, Type B - Embossed</td></tr> <tr><td>Squareness</td><td>ASTM F2421 - Passes - ±0.10" max</td></tr> <tr><td>Size and Tolerance</td><td>Tile ASTM F2055; Plank ASTM F2421 - Passes - ±0.16"/linear foot</td></tr> <tr><td>Thickness</td><td>ASTM F386 - Passes - as specified ±0.005"</td></tr> <tr><td>Flexibility</td><td>ASTM F137 - Passes - 1" mandrel</td></tr> <tr><td>Dimensional Stability</td><td>ASTM F2199 - Passes - 0.020"/linear foot max</td></tr> <tr><td>Static Load Limit</td><td>ASTM F970 (modified) - 1000 psi</td></tr> <tr><td>Residual Indentation</td><td>ASTM F1914 - Passes - Average less than 8%, maximum single reading 10%</td></tr> <tr><td>Slip Resistance</td><td>ASTM C1028 - Passes - Wet: greater than/equal to 0.5</td></tr> <tr><td>Resistance to Chemicals</td><td>ASTM F925 - Passes - No more than a slight change in surface dulling, surface attack, or staining</td></tr> <tr><td>Resistance to Light</td><td>ASTM F1515 - Passes - ΔE < 8</td></tr> <tr><td>Resistance to Heat</td><td>ASTM F1514 - Passes - ΔE < 8</td></tr> <tr><td>Critical Radiant Flux</td><td>ASTM E648 - Class 1 (>0.45 W/cm²)</td></tr> <tr><td>Smoke Density</td><td>ASTM E662 Part A - Less than 450</td></tr> <tr><td>Installation</td><td>Floating LVT with Uniclic® Locking System</td></tr> <tr><td>Optional Underlayment</td><td>Mohawk ActiveSound™</td></tr> <tr><td>Certification</td><td>FloorScore® Certified</td></tr> <tr><td>Warranty</td><td>Limited 10 Year Light Commercial Warranty Limited 25 Year Residential Warranty</td></tr> </table>	Brand	Aladdin Commercial	Style Name / Number	Grass Valley Clic / AH014	Product Type	Commercial Grade Luxury Vinyl Tile (Clic)	Overall Gauge	4.2mm	Wear Layer	12 mil (0.3mm)	Finish	M-Force™ 1 Enhanced Urethane	Colors Available	14	Size	8" x 48" (203.2mm x 1,219.2mm) 12" x 24" (304.8mm x 609.6mm)	Packaging	8" x 48" 18.22 sf/ctn; 60 ctns/pallet; 432.11 oz/ctn 12" x 24" 19.58 sf/ctn; 65 ctns/pallet; 460 oz/ctn	Classification	ASTM F1700 - Class III, Type A - Smooth, Type B - Embossed	Squareness	ASTM F2421 - Passes - ±0.10" max	Size and Tolerance	Tile ASTM F2055; Plank ASTM F2421 - Passes - ±0.16"/linear foot	Thickness	ASTM F386 - Passes - as specified ±0.005"	Flexibility	ASTM F137 - Passes - 1" mandrel	Dimensional Stability	ASTM F2199 - Passes - 0.020"/linear foot max	Static Load Limit	ASTM F970 (modified) - 1000 psi	Residual Indentation	ASTM F1914 - Passes - Average less than 8%, maximum single reading 10%	Slip Resistance	ASTM C1028 - Passes - Wet: greater than/equal to 0.5	Resistance to Chemicals	ASTM F925 - Passes - No more than a slight change in surface dulling, surface attack, or staining	Resistance to Light	ASTM F1515 - Passes - ΔE < 8	Resistance to Heat	ASTM F1514 - Passes - ΔE < 8	Critical Radiant Flux	ASTM E648 - Class 1 (>0.45 W/cm ²)	Smoke Density	ASTM E662 Part A - Less than 450	Installation	Floating LVT with Uniclic® Locking System	Optional Underlayment	Mohawk ActiveSound™	Certification	FloorScore® Certified	Warranty	Limited 10 Year Light Commercial Warranty Limited 25 Year Residential Warranty
Brand	Aladdin Commercial																																																						
Style Name / Number	Grass Valley Clic / AH014																																																						
Product Type	Commercial Grade Luxury Vinyl Tile (Clic)																																																						
Overall Gauge	4.2mm																																																						
Wear Layer	12 mil (0.3mm)																																																						
Finish	M-Force™ 1 Enhanced Urethane																																																						
Colors Available	14																																																						
Size	8" x 48" (203.2mm x 1,219.2mm) 12" x 24" (304.8mm x 609.6mm)																																																						
Packaging	8" x 48" 18.22 sf/ctn; 60 ctns/pallet; 432.11 oz/ctn 12" x 24" 19.58 sf/ctn; 65 ctns/pallet; 460 oz/ctn																																																						
Classification	ASTM F1700 - Class III, Type A - Smooth, Type B - Embossed																																																						
Squareness	ASTM F2421 - Passes - ±0.10" max																																																						
Size and Tolerance	Tile ASTM F2055; Plank ASTM F2421 - Passes - ±0.16"/linear foot																																																						
Thickness	ASTM F386 - Passes - as specified ±0.005"																																																						
Flexibility	ASTM F137 - Passes - 1" mandrel																																																						
Dimensional Stability	ASTM F2199 - Passes - 0.020"/linear foot max																																																						
Static Load Limit	ASTM F970 (modified) - 1000 psi																																																						
Residual Indentation	ASTM F1914 - Passes - Average less than 8%, maximum single reading 10%																																																						
Slip Resistance	ASTM C1028 - Passes - Wet: greater than/equal to 0.5																																																						
Resistance to Chemicals	ASTM F925 - Passes - No more than a slight change in surface dulling, surface attack, or staining																																																						
Resistance to Light	ASTM F1515 - Passes - ΔE < 8																																																						
Resistance to Heat	ASTM F1514 - Passes - ΔE < 8																																																						
Critical Radiant Flux	ASTM E648 - Class 1 (>0.45 W/cm ²)																																																						
Smoke Density	ASTM E662 Part A - Less than 450																																																						
Installation	Floating LVT with Uniclic® Locking System																																																						
Optional Underlayment	Mohawk ActiveSound™																																																						
Certification	FloorScore® Certified																																																						
Warranty	Limited 10 Year Light Commercial Warranty Limited 25 Year Residential Warranty																																																						

LVT	<table border="0"> <tr><td>Brand</td><td>Aladdin Commercial</td></tr> <tr><td>Style Name / Number</td><td>Grass Valley 12 / AH015</td></tr> <tr><td>Product Type</td><td>Commercial Grade Luxury Vinyl Tile (Glue Down)</td></tr> <tr><td>Overall Gauge</td><td>2.5mm</td></tr> <tr><td>Wear Layer</td><td>12 mil (0.3mm)</td></tr> <tr><td>Finish</td><td>M-Force™ 1 Enhanced Urethane</td></tr> <tr><td>Colors Available</td><td>14</td></tr> <tr><td>Size</td><td>8" x 48" (203.2mm x 1,219.2mm) 12" x 24" (304.8mm x 609.6mm)</td></tr> <tr><td>Packaging</td><td>8" x 48" 34.67 sf/ctn; 60 ctns/pallet; 458.51 oz/ctn 12" x 24" 36 sf/ctn; 65 ctns/pallet; 476.10 oz/ctn</td></tr> <tr><td>Classification</td><td>ASTM F1700 - Class III, Type A - Smooth, Type B - Embossed</td></tr> <tr><td>Squareness</td><td>ASTM F2421 - Passes - ±0.10" max</td></tr> <tr><td>Size and Tolerance</td><td>Tile ASTM F2055; Plank ASTM F2421 - Passes - ±0.16"/linear foot</td></tr> <tr><td>Thickness</td><td>ASTM F386 - Passes - as specified ±0.005"</td></tr> <tr><td>Flexibility</td><td>ASTM F137 - Passes - 1" mandrel</td></tr> <tr><td>Dimensional Stability</td><td>ASTM F2199 - Passes - 0.020"/linear foot max</td></tr> <tr><td>Static Load Limit</td><td>ASTM F970 (modified) - 1500 psi</td></tr> <tr><td>Residual Indentation</td><td>ASTM F1914 - Passes - Average less than 8%, maximum single reading 10%</td></tr> <tr><td>Slip Resistance</td><td>ASTM C1028 - Passes - Wet: greater than/equal to 0.5</td></tr> <tr><td>Resistance to Chemicals</td><td>ASTM F925 - Passes - No more than a slight change in surface dulling, surface attack, or staining</td></tr> <tr><td>Resistance to Light</td><td>ASTM F1515 - Passes - ΔE < 8</td></tr> <tr><td>Resistance to Heat</td><td>ASTM F1514 - Passes - ΔE < 8</td></tr> <tr><td>Critical Radiant Flux</td><td>ASTM E648 - Class 1 (>0.45 W/cm²)</td></tr> <tr><td>Smoke Density</td><td>ASTM E662 Part A - Less than 450</td></tr> <tr><td>Installation</td><td>Glue Down</td></tr> <tr><td>Adhesive</td><td>M95.0 Resilient Flooring Adhesive, MS160 Spray or M700 Pressure Sensitive Adhesive</td></tr> <tr><td>Optional Underlayment</td><td>Mohawk AccuSound™</td></tr> <tr><td>Certification</td><td>FloorScore® Certified</td></tr> <tr><td>Warranty</td><td>Limited 10 Year Light Commercial Warranty Limited 25 Year Residential Warranty</td></tr> </table>	Brand	Aladdin Commercial	Style Name / Number	Grass Valley 12 / AH015	Product Type	Commercial Grade Luxury Vinyl Tile (Glue Down)	Overall Gauge	2.5mm	Wear Layer	12 mil (0.3mm)	Finish	M-Force™ 1 Enhanced Urethane	Colors Available	14	Size	8" x 48" (203.2mm x 1,219.2mm) 12" x 24" (304.8mm x 609.6mm)	Packaging	8" x 48" 34.67 sf/ctn; 60 ctns/pallet; 458.51 oz/ctn 12" x 24" 36 sf/ctn; 65 ctns/pallet; 476.10 oz/ctn	Classification	ASTM F1700 - Class III, Type A - Smooth, Type B - Embossed	Squareness	ASTM F2421 - Passes - ±0.10" max	Size and Tolerance	Tile ASTM F2055; Plank ASTM F2421 - Passes - ±0.16"/linear foot	Thickness	ASTM F386 - Passes - as specified ±0.005"	Flexibility	ASTM F137 - Passes - 1" mandrel	Dimensional Stability	ASTM F2199 - Passes - 0.020"/linear foot max	Static Load Limit	ASTM F970 (modified) - 1500 psi	Residual Indentation	ASTM F1914 - Passes - Average less than 8%, maximum single reading 10%	Slip Resistance	ASTM C1028 - Passes - Wet: greater than/equal to 0.5	Resistance to Chemicals	ASTM F925 - Passes - No more than a slight change in surface dulling, surface attack, or staining	Resistance to Light	ASTM F1515 - Passes - ΔE < 8	Resistance to Heat	ASTM F1514 - Passes - ΔE < 8	Critical Radiant Flux	ASTM E648 - Class 1 (>0.45 W/cm ²)	Smoke Density	ASTM E662 Part A - Less than 450	Installation	Glue Down	Adhesive	M95.0 Resilient Flooring Adhesive, MS160 Spray or M700 Pressure Sensitive Adhesive	Optional Underlayment	Mohawk AccuSound™	Certification	FloorScore® Certified	Warranty	Limited 10 Year Light Commercial Warranty Limited 25 Year Residential Warranty
Brand	Aladdin Commercial																																																								
Style Name / Number	Grass Valley 12 / AH015																																																								
Product Type	Commercial Grade Luxury Vinyl Tile (Glue Down)																																																								
Overall Gauge	2.5mm																																																								
Wear Layer	12 mil (0.3mm)																																																								
Finish	M-Force™ 1 Enhanced Urethane																																																								
Colors Available	14																																																								
Size	8" x 48" (203.2mm x 1,219.2mm) 12" x 24" (304.8mm x 609.6mm)																																																								
Packaging	8" x 48" 34.67 sf/ctn; 60 ctns/pallet; 458.51 oz/ctn 12" x 24" 36 sf/ctn; 65 ctns/pallet; 476.10 oz/ctn																																																								
Classification	ASTM F1700 - Class III, Type A - Smooth, Type B - Embossed																																																								
Squareness	ASTM F2421 - Passes - ±0.10" max																																																								
Size and Tolerance	Tile ASTM F2055; Plank ASTM F2421 - Passes - ±0.16"/linear foot																																																								
Thickness	ASTM F386 - Passes - as specified ±0.005"																																																								
Flexibility	ASTM F137 - Passes - 1" mandrel																																																								
Dimensional Stability	ASTM F2199 - Passes - 0.020"/linear foot max																																																								
Static Load Limit	ASTM F970 (modified) - 1500 psi																																																								
Residual Indentation	ASTM F1914 - Passes - Average less than 8%, maximum single reading 10%																																																								
Slip Resistance	ASTM C1028 - Passes - Wet: greater than/equal to 0.5																																																								
Resistance to Chemicals	ASTM F925 - Passes - No more than a slight change in surface dulling, surface attack, or staining																																																								
Resistance to Light	ASTM F1515 - Passes - ΔE < 8																																																								
Resistance to Heat	ASTM F1514 - Passes - ΔE < 8																																																								
Critical Radiant Flux	ASTM E648 - Class 1 (>0.45 W/cm ²)																																																								
Smoke Density	ASTM E662 Part A - Less than 450																																																								
Installation	Glue Down																																																								
Adhesive	M95.0 Resilient Flooring Adhesive, MS160 Spray or M700 Pressure Sensitive Adhesive																																																								
Optional Underlayment	Mohawk AccuSound™																																																								
Certification	FloorScore® Certified																																																								
Warranty	Limited 10 Year Light Commercial Warranty Limited 25 Year Residential Warranty																																																								

LVT	<table border="0"> <tr><td>Brand</td><td>Aladdin Commercial</td></tr> <tr><td>Style Name / Number</td><td>Grass Valley 20 / AH016</td></tr> <tr><td>Product Type</td><td>Commercial Grade Luxury Vinyl Tile (Glue Down)</td></tr> <tr><td>Overall Gauge</td><td>2.5mm</td></tr> <tr><td>Wear Layer</td><td>20 mil (0.5mm)</td></tr> <tr><td>Finish</td><td>M-Force™ 1 Enhanced Urethane</td></tr> <tr><td>Colors Available</td><td>14</td></tr> <tr><td>Size</td><td>8" x 48" (203.2mm x 1,219.2mm) 12" x 24" (304.8mm x 609.6mm)</td></tr> <tr><td>Packaging</td><td>8" x 48" 34.67 sf/ctn; 60 ctns/pallet; 458.51 oz/ctn 12" x 24" 36 sf/ctn; 65 ctns/pallet; 476.10 oz/ctn</td></tr> <tr><td>Classification</td><td>ASTM F1700 - Class III, Type A - Smooth, Type B - Embossed</td></tr> <tr><td>Squareness</td><td>ASTM F2421 - Passes - ±0.10" max</td></tr> <tr><td>Size and Tolerance</td><td>Tile ASTM F2055; Plank ASTM F2421 - Passes - ±0.16"/linear foot</td></tr> <tr><td>Thickness</td><td>ASTM F386 - Passes - as specified ±0.005"</td></tr> <tr><td>Flexibility</td><td>ASTM F137 - Passes - 1" mandrel</td></tr> <tr><td>Dimensional Stability</td><td>ASTM F2199 - Passes - 0.020"/linear foot max</td></tr> <tr><td>Static Load Limit</td><td>ASTM F970 (modified) - 1500 psi</td></tr> <tr><td>Residual Indentation</td><td>ASTM F1914 - Passes - Average less than 8%, maximum single reading 10%</td></tr> <tr><td>Slip Resistance</td><td>ASTM C1028 - Passes - Wet: greater than/equal to 0.5</td></tr> <tr><td>Resistance to Chemicals</td><td>ASTM F925 - Passes - No more than a slight change in surface dulling, surface attack, or staining</td></tr> <tr><td>Resistance to Light</td><td>ASTM F1515 - Passes - ΔE < 8</td></tr> <tr><td>Resistance to Heat</td><td>ASTM F1514 - Passes - ΔE < 8</td></tr> <tr><td>Critical Radiant Flux</td><td>ASTM E648 - Class 1 (>0.45 W/cm²)</td></tr> <tr><td>Smoke Density</td><td>ASTM E662 Part A - Less than 450</td></tr> <tr><td>Installation</td><td>Glue Down</td></tr> <tr><td>Adhesive</td><td>M95.0 Resilient Flooring Adhesive, MS160 Spray or M700 Pressure Sensitive Adhesive</td></tr> <tr><td>Optional Underlayment</td><td>Mohawk AccuSound™</td></tr> <tr><td>Certification</td><td>FloorScore® Certified</td></tr> <tr><td>Warranty</td><td>Limited 10 Year Commercial Warranty Limited 25 Year Residential Warranty</td></tr> </table>	Brand	Aladdin Commercial	Style Name / Number	Grass Valley 20 / AH016	Product Type	Commercial Grade Luxury Vinyl Tile (Glue Down)	Overall Gauge	2.5mm	Wear Layer	20 mil (0.5mm)	Finish	M-Force™ 1 Enhanced Urethane	Colors Available	14	Size	8" x 48" (203.2mm x 1,219.2mm) 12" x 24" (304.8mm x 609.6mm)	Packaging	8" x 48" 34.67 sf/ctn; 60 ctns/pallet; 458.51 oz/ctn 12" x 24" 36 sf/ctn; 65 ctns/pallet; 476.10 oz/ctn	Classification	ASTM F1700 - Class III, Type A - Smooth, Type B - Embossed	Squareness	ASTM F2421 - Passes - ±0.10" max	Size and Tolerance	Tile ASTM F2055; Plank ASTM F2421 - Passes - ±0.16"/linear foot	Thickness	ASTM F386 - Passes - as specified ±0.005"	Flexibility	ASTM F137 - Passes - 1" mandrel	Dimensional Stability	ASTM F2199 - Passes - 0.020"/linear foot max	Static Load Limit	ASTM F970 (modified) - 1500 psi	Residual Indentation	ASTM F1914 - Passes - Average less than 8%, maximum single reading 10%	Slip Resistance	ASTM C1028 - Passes - Wet: greater than/equal to 0.5	Resistance to Chemicals	ASTM F925 - Passes - No more than a slight change in surface dulling, surface attack, or staining	Resistance to Light	ASTM F1515 - Passes - ΔE < 8	Resistance to Heat	ASTM F1514 - Passes - ΔE < 8	Critical Radiant Flux	ASTM E648 - Class 1 (>0.45 W/cm ²)	Smoke Density	ASTM E662 Part A - Less than 450	Installation	Glue Down	Adhesive	M95.0 Resilient Flooring Adhesive, MS160 Spray or M700 Pressure Sensitive Adhesive	Optional Underlayment	Mohawk AccuSound™	Certification	FloorScore® Certified	Warranty	Limited 10 Year Commercial Warranty Limited 25 Year Residential Warranty
Brand	Aladdin Commercial																																																								
Style Name / Number	Grass Valley 20 / AH016																																																								
Product Type	Commercial Grade Luxury Vinyl Tile (Glue Down)																																																								
Overall Gauge	2.5mm																																																								
Wear Layer	20 mil (0.5mm)																																																								
Finish	M-Force™ 1 Enhanced Urethane																																																								
Colors Available	14																																																								
Size	8" x 48" (203.2mm x 1,219.2mm) 12" x 24" (304.8mm x 609.6mm)																																																								
Packaging	8" x 48" 34.67 sf/ctn; 60 ctns/pallet; 458.51 oz/ctn 12" x 24" 36 sf/ctn; 65 ctns/pallet; 476.10 oz/ctn																																																								
Classification	ASTM F1700 - Class III, Type A - Smooth, Type B - Embossed																																																								
Squareness	ASTM F2421 - Passes - ±0.10" max																																																								
Size and Tolerance	Tile ASTM F2055; Plank ASTM F2421 - Passes - ±0.16"/linear foot																																																								
Thickness	ASTM F386 - Passes - as specified ±0.005"																																																								
Flexibility	ASTM F137 - Passes - 1" mandrel																																																								
Dimensional Stability	ASTM F2199 - Passes - 0.020"/linear foot max																																																								
Static Load Limit	ASTM F970 (modified) - 1500 psi																																																								
Residual Indentation	ASTM F1914 - Passes - Average less than 8%, maximum single reading 10%																																																								
Slip Resistance	ASTM C1028 - Passes - Wet: greater than/equal to 0.5																																																								
Resistance to Chemicals	ASTM F925 - Passes - No more than a slight change in surface dulling, surface attack, or staining																																																								
Resistance to Light	ASTM F1515 - Passes - ΔE < 8																																																								
Resistance to Heat	ASTM F1514 - Passes - ΔE < 8																																																								
Critical Radiant Flux	ASTM E648 - Class 1 (>0.45 W/cm ²)																																																								
Smoke Density	ASTM E662 Part A - Less than 450																																																								
Installation	Glue Down																																																								
Adhesive	M95.0 Resilient Flooring Adhesive, MS160 Spray or M700 Pressure Sensitive Adhesive																																																								
Optional Underlayment	Mohawk AccuSound™																																																								
Certification	FloorScore® Certified																																																								
Warranty	Limited 10 Year Commercial Warranty Limited 25 Year Residential Warranty																																																								

Aladdin™
COMMERCIAL

Mohawk Industries, Inc. warrants its adhesives for the life of the original installation only when a Mohawk Industries style (product) is installed. Mohawk's floor preparation procedures must be followed to ensure that the substrate has been prepared properly. Failure to use Mohawk Industries adhesives or to follow Mohawk's floor preparation procedures will void all lifetime adhesive warranties. Please contact your local Sales Representative for installation guidelines.

Mohawk is providing this architect folder for the purpose of promoting our commercial business. Color may vary from dye lot to dye lot. Substitution of material may be made due to improved technology, supply limitations or other factors. The performance of this product is not affected by such variations. We recommend the use of chair pads on all commercial installations.

For current and complete specifications please call tech support at 888-387-9881 or visit www.mohawkflooring.com 1 800.233.4490



Up to 10,000 sq. ft. available within 10 business days or less

