



Definity from Durkan



LAKIR

By Arnavaz Barshan



Lakir, QTW40631-MW413, shown with Global Entry LVT, Antiek 989



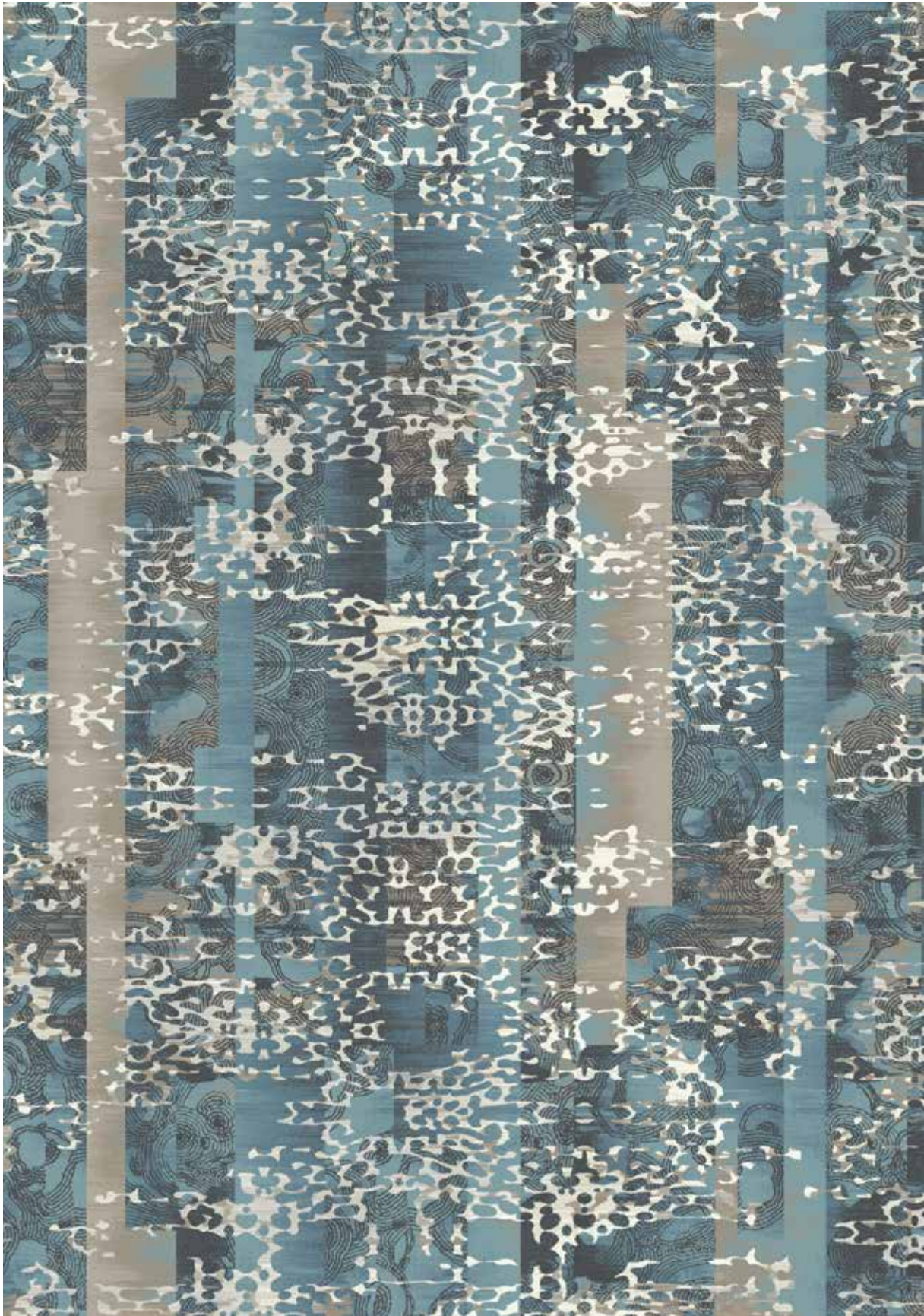
1	090061	C	
2	6024	C	LL
3	840032	C	
4	090056	C	
5	930010	C	L
6	540005	C	
7	540004	C	
8	080133	C	L
9	820006	C	LL

QTW40631-MW413

30' (w) X 30' (l) SM

C - Cut L - Loop LL - Lower Loop



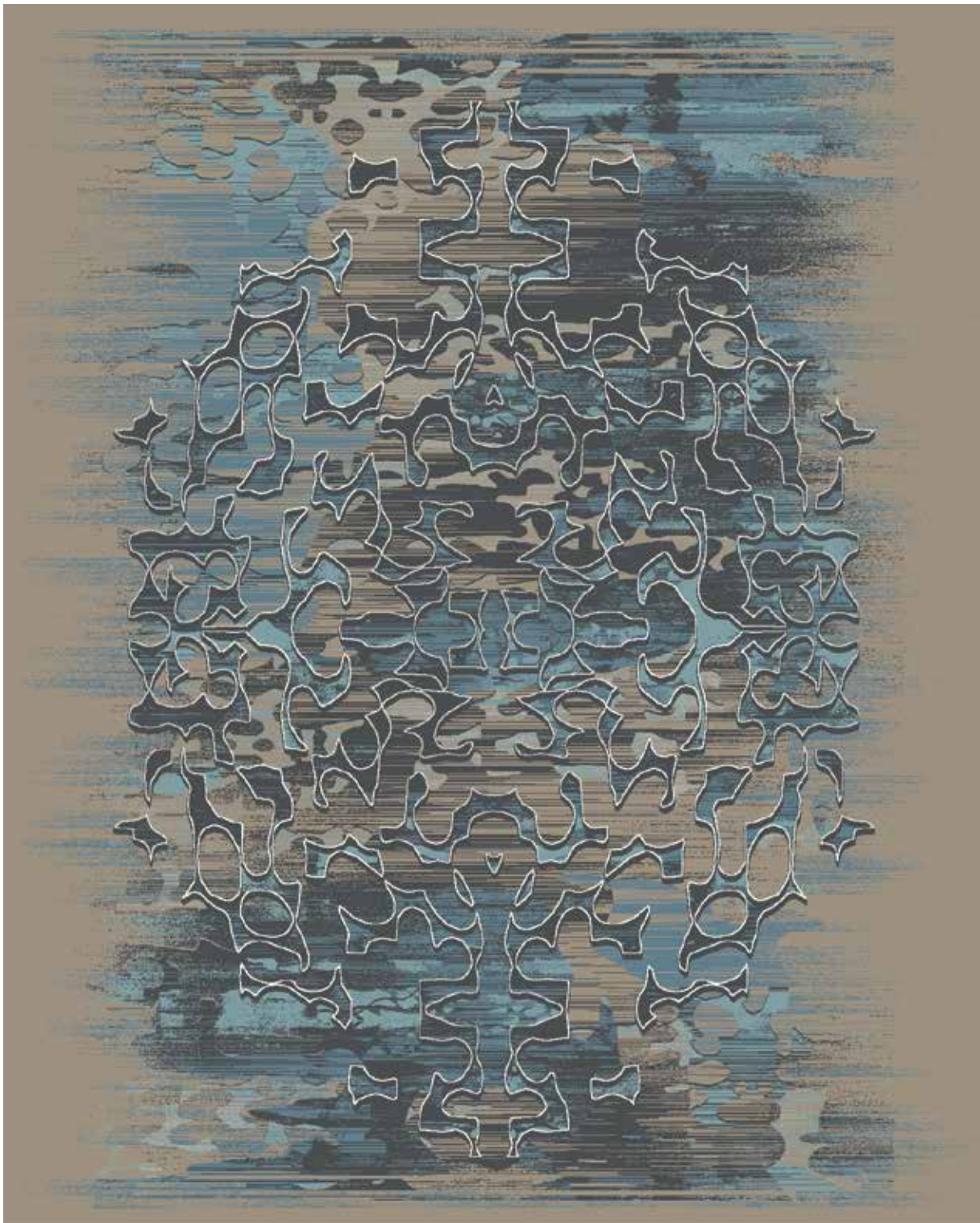


1	090061	C
2	6024	C
3	840032	C
4	090056	C
5	930010	C
6	540005	C
7	540004	C
8	080133	C
9	820006	C

QW40649-MW413

30' (w) X 30' (l) SM

C - Cut L - Loop LL - Lower Loop



1	090061	C
2	6024	C
3	840032	C
4	930010	C
5	540005	C
6	540004	C
7	820006	C

QW40647-MW413

10' (w) X 12'6" (l) Elevator Lobby Rug
(Pattern may need to be redesigned to fit your specific floor plan)

C - Cut L - Loop LL - Lower Loop

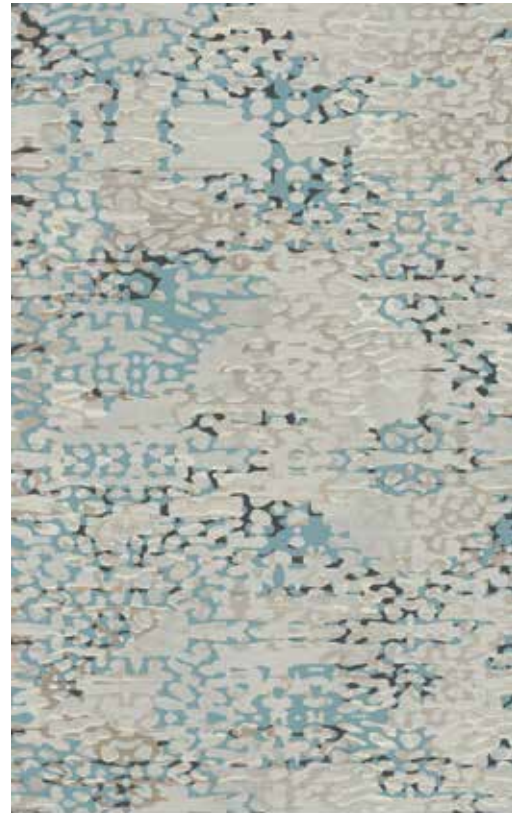




1	090061	C
2	6024	C
3	840032	C
4	090056	C
5	930010	C
6	540005	C
7	540004	C L

QTW40637-MW413

15' (w) X 15' (l) SM



1	090061	C
2	6024	C
3	840032	C
4	090056	C
5	930010	C
6	540004	C
7	080133	C

QW40640-MW413

15' (w) X 15' (l) SM



1	090061	C
2	6024	C
3	840032	C
4	090056	C
5	540005	C
6	540004	C
7	080133	C

QW40635-MW413

15' (w) X 12' (l) SM



C - Cut L - Loop LL - Lower Loop



1	090061	C
2	6024	C
3	840032	C L
4	090056	C
5	930010	C LL
6	540005	C
7	540004	C
8	080133	C
9	820006	C

QTW40650-MW413

45' (w) X 30' (l) SM

C - Cut L - Loop LL - Lower Loop





1	090061	C
2	6024	C
3	840032	C
4	090056	C
5	930010	C
6	540005	C
7	540004	C
8	080133	L
9	820006	LL

QW40630-MW413

15' (w) X 7'6" (l) SM



1	090061	C
2	6024	C
3	840032	C
4	090056	C
5	930010	C
6	540005	C
7	540004	C

QW40636-MW413

15' (w) X 12' (l) SM

C - Cut L - Loop LL - Lower Loop



1	090061	C
2	6024	LL
3	840032	
4	090056	C
5	540005	C
6	540004	C
7	080133	C
8	820006	L

QTW40632-MW413

3'9" (w) X 3'9" (l) SM



1	090061	C
2	6024	LL
3	840032	
4	090056	C
5	930010	C
6	540005	C
7	540004	C
8	080133	C
9	820006	C

QTW40648-MW413

7'6" (w) X 40' (l) Corridor

C - Cut L - Loop LL - Lower Loop





1	090061	C
2	6024	C
3	840032	C
4	930010	C
5	540005	C
6	540004	C

QW40646-MW413

7'6" (w) X 11'3" (l) SM

C - Cut L - Loop LL - Lower Loop



1	090061	C
2	6024	C
3	090056	C
4	930010	C
5	540005	C
6	080133	L
7	820006	L

QTW40645-MW413 7'6" (w) X 17' (l) SM



1	6024	C
2	840032	C
3	090056	C
4	930010	C
5	080133	C
6	820006	C

QW40642-MW413 15' (w) X 22'6" (l) SM

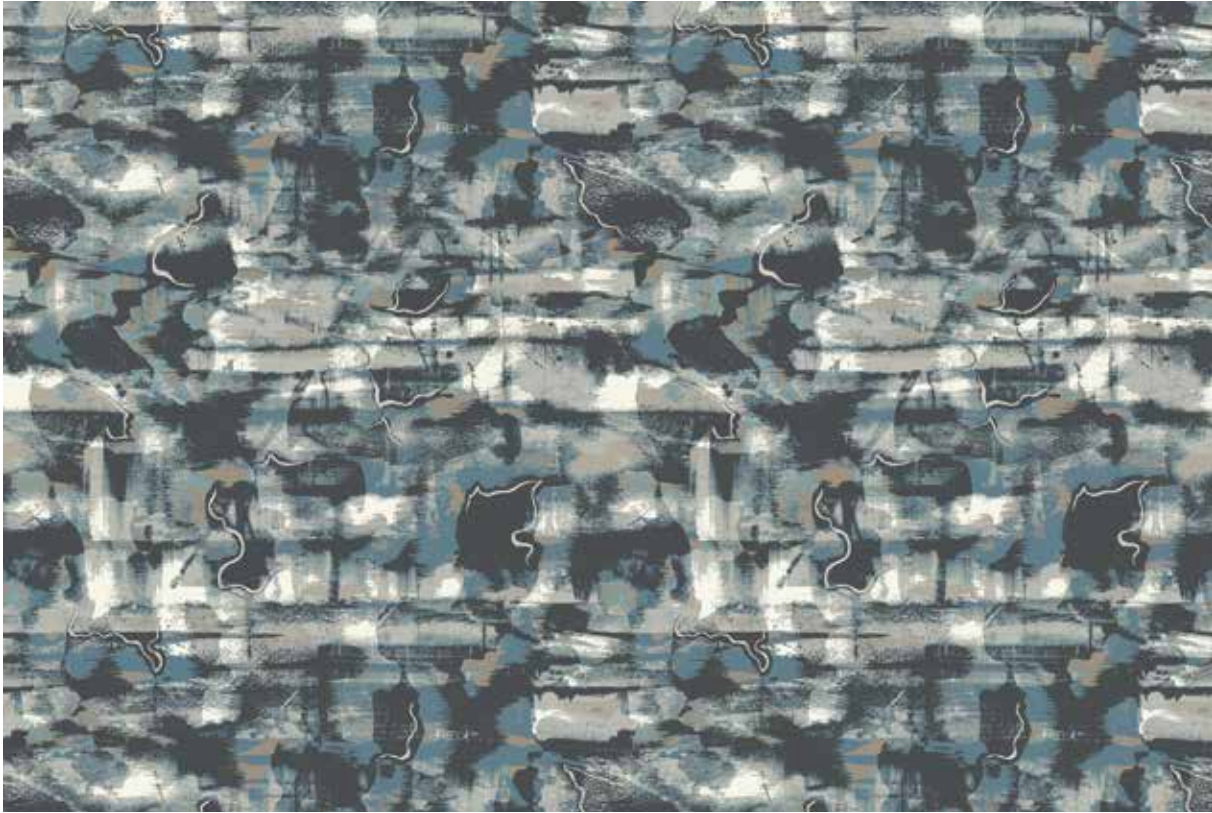


1	090061	C
2	840032	C
3	930010	C
4	540005	C
5	540004	C
6	080133	C

QW40641-MW413 7'6" (w) X 7'6" (l) SM

C - Cut L - Loop LL - Lower Loop





1	090061	C
2	6024	C
3	840032	C
4	090056	C
5	930010	C
6	540005	C
7	540004	C
8	820006	C

QW40638-MW413

7'6" (w) X 7'6" (l) SM



1	090061	C
2	6024	C
3	840032	C
4	090056	C
5	540005	C
6	540004	C
7	080133	C

QW40643-MW413

7'6" (w) X 12' (l) Corridor



1	6024	C
2	840032	C
3	090056	C
4	080133	C

QW40639-MW413

15' (w) X 11' (l) SM

C - Cut L - Loop LL - Lower Loop



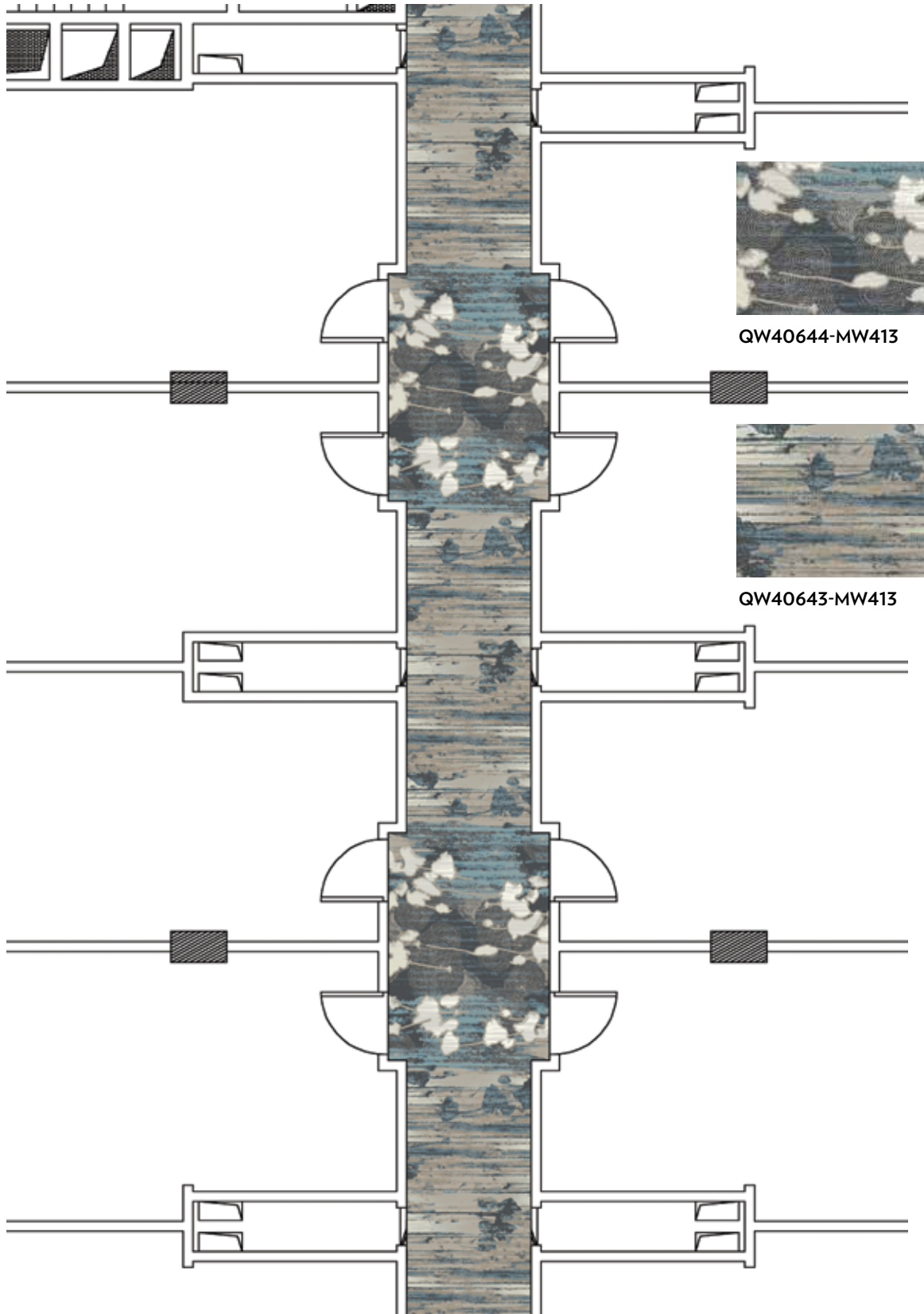
1	090061	C	LL
2	6024	C	
3	840032	C	
4	090056	C	
5	930010	L	L
6	540005	C	
7	540004	C	
8	080133	C	
9	820006	C	

QTW40644-MW413

7'6" (w) X 12' (l) Door Drop

C - Cut L - Loop LL - Lower Loop





QW40644-MW413

QW40643-MW413



QW40649-MW413



QW40650-MW413

Some patterns featured in this brochure are "Conceptual" since the scales are exaggerated for appearance.
Actual aesthetics may vary based on your actual floor plan layout and installation requirements.



DURKAN. IMAGINE THAT.

405 Virgil Drive Dalton, GA 30721
(800) 241-4580 | Durkan.com

LAKIR SLT0003812

A division of the  Mohawk Group

DEFINITY | SYNTHESIS | PRINT | CYP | TUFTED | CARPET TILE
LVT | RUBBER | SHEET | LAMINATE | HARDWOOD | RUGS

