



# Max Service Tile

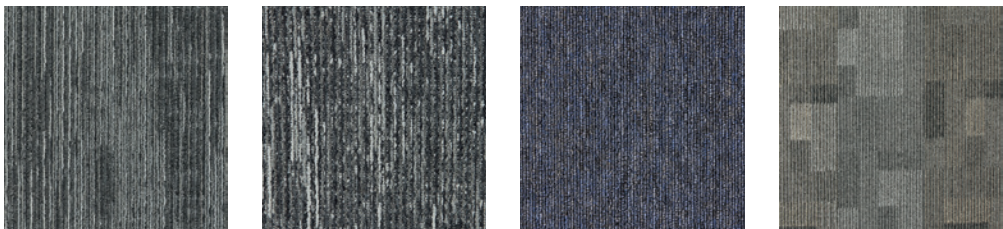
Infinite Impact   Statement Fabric   Renewed Path   Mindful Tile





Max Service is a suite of collections featuring some of our most popular patterns, carefully curated into a range of coordinating color palettes. Each collection features a different combination of fiber and backing to fit your performance conditions and budget.

These color palettes are shown with coordinating Quickship hard surface options to meet all of your application needs. All styles are available to ship within 10 business days or less so that you can complete your project with ease and confidence.





Cover: Infinite Impact 978 Wrought Iron, Centrato 718 Calypso (Brick Ashlar Installation)





# Infinite Impact

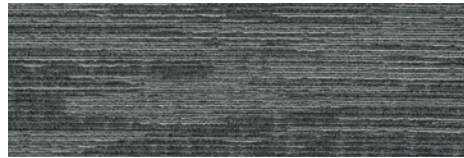
**Size:** 12" x 36"

**Fiber Type:** Envirostrand PET

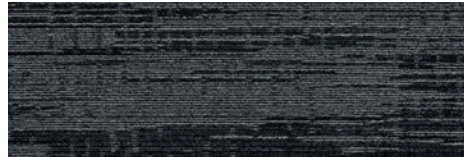
**Dye Method:** Solution Dyed

**Backing:** EcoFlex Matrix

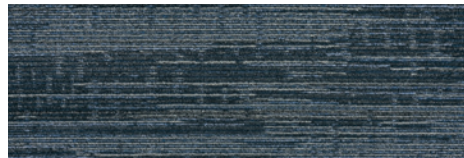
## MAX SERVICE COLORWAYS



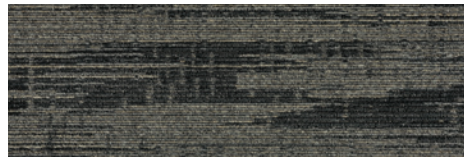
949 Polished Pewter



989 Blacken Onyx



559 Blue Sapphire



978 Wrought Iron











# Statement Fabric

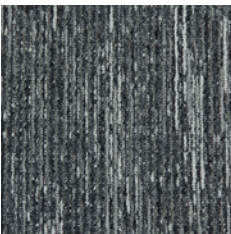
**Size:** 24" x 24"

**Fiber Type:** Envirostrand PET

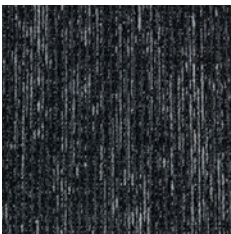
**Dye Method:** Solution Dyed

**Backing:** EcoFlex Matrix

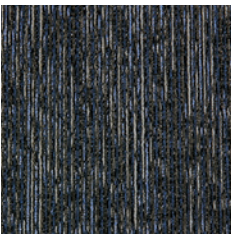
**MAX SERVICE COLORWAYS**



949 Light Slate



989 Dark Charcoal



559 Deep Navy



978 Mid Grey











# Renewed Path

**Size:** 24" x 24"

**Fiber Type:** Envirostrand PET

**Dye Method:** Solution Dyed

**Dye Lots:** Random and Mergeable

**Backing:** EcoFlex Matrix

## MAX SERVICE COLORWAYS



888 French Roast



949 Greige



559 Deep Sea



978 Iron Ore











# Mindful Tile

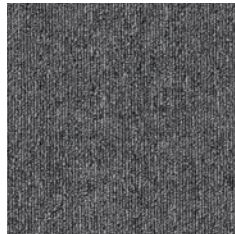
**Size:** 24" x 24"

**Fiber Type:** Envirostrand PET

**Dye Method:** Solution Dyed

**Backing:** EcoFlex Matrix

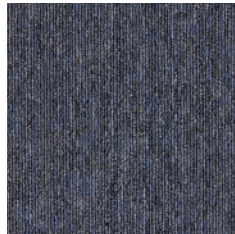
## MAX SERVICE COLORWAYS



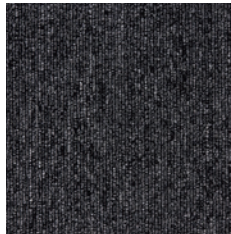
949 Pewter



959 Nickel



589 Cobalt



979 Charcoal











# Centrato

COORDINATING GLUE DOWN LVT

Centrato LVT features six wood visuals in neutral palettes that can be mixed and matched easily with any carpet tile selection and colorway. Centrato's high performance construction features a 20 mil commercial wear layer, M-Force™ finish and is polish-optional for cost-effective maintenance.



751 Almondine



264 Nutmeg



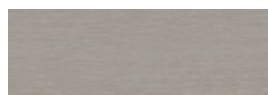
659 Studio



718 Calypso



888 Peat



929 Oyster



## PERFORMANCE

Centrato LVT features M-Force™ defense technology providing exceptional scratch, puncture and stain resistance for lasting beauty.



## EASY TO CLEAN

M-Force™ finish provides greater stain and soil protection, offering a flooring solution that is easy to clean and maintain.



## MADE IN THE USA

Centrato LVT is made in our US resilient facility, offering industry-leading serviceability and supporting our local economies.



Centrato 718 Calypso



# EnviroStrand™ SD

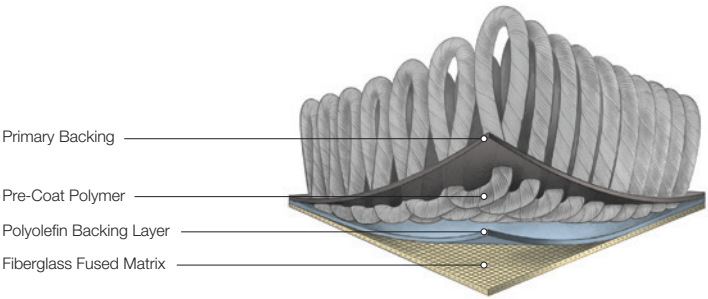
EnviroStrand solution-dyed fiber aligns Mohawk Group’s industry leadership in sustainability and design to create reliable, high performance, visually stunning carpet. Giving new purpose to discarded plastic bottles by turning them into PET carpet fiber, which requires less energy to manufacture, Mohawk Group utilizes a patented process that enhances the strength of the yarn while incorporating a multi-step purification process that ensures that the carpet resists dirt, grime and contaminants. EnviroStrand fiber is also offered in a flexible collection of color options that is used to produce new product styles.



# EcoFlex™ Matrix

SUSTAINABLE CARPET TILE BACKING

Mohawk Group continues its dedication to sustainable solutions with EcoFlex™ Matrix, the next generation in carpet tile backing. Using advanced materials and patent pending engineering, EcoFlex Matrix lowers environmental impact without sacrificing performance. EcoFlex Matrix simplifies floor preparation and installation, greatly reduces sub-floor moisture concerns, and is easier to ship and handle.







# Elemental Edges

FINISHING ACCESSORIES

At Mohawk Group we believe in providing project solutions that are easy to select and readily available. Elemental Edges is a complete portfolio of free-to-ship accessories for all your flooring installation and finishing needs. The program is offered in 14 QuickShip colors that coordinate perfectly with our full suite of soft and hard surface products.



## Wall Base

Seamlessly coordinate your wall base and Mohawk Group floor covering from our variety of QuickShip wall base offerings.

### AVAILABLE IN

- Rubber
- Vinyl
- 4" or 6" in height
- Coved or straight
- 4' lengths or 96' & 120' rolls
- 1/8" gauge
- .080" gauge (4" Cove vinyl)

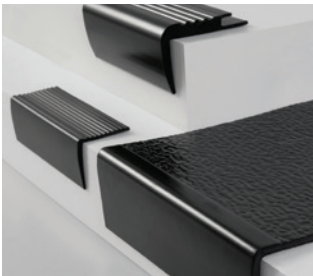


## Installation Accessories

Add a functional finishing touch to your coordinated color scheme with Mohawk Group installation accessories. Proprietary Rubber formulations are shrink and crack-proof, and won't fade, even in direct sunlight.

### CHOOSE FROM

- Universal Transitions
- Reducers
- Cove Stick
- Adaptors
- Stair Solutions



## Stair Solutions

Specify 12.5" regular tread or 20" integrated tread/riser, available in 48" and 72" lengths. Round and hammered finishes are available with standard square nose. All profiles are available with or without visually impaired strips.

### CHOOSE FROM

- Stair Treads
- Resilient Landing Tiles
- Risers
- Nosings



# Specifications

Infinite Impact QB499, Statement Fabric QB448  
Mindful Tile QB446, Renewed Path QB578

## DESIGN

Size	
Infinite Impact	12" x 36" (.3048m x .9144m)
Renewed Path, Mindful Tile, Statement Fabric	24" x 24" (.6096m x .6096m)
Surface Appearance	Textured Patterned Loop
Fiber Type	Envirostrand™ PET
Dye Method	Solution Dyed
Installation Methods	
Infinite Impact	Monolithic / Half-Lap / Brick Ashlar / Basket Weave / Plank Half-Lap / Monolithic Stepping / Random / Herringbone
Renewed Path	Quarter Turn / Monolithic / Brick Ashlar / Vertical Ashlar / Multi-Directional
Mindful Tile	Monolithic / Vertical Ashlar / Brick Ashlar / Quarter Turn
Statement Fabric	Quarter Turn / Brick Ashlar / Vertical Ashlar
Colors Available	4

## PERFORMANCE

Construction	Tufted
Gauge	
Infinite Impact, Renewed Path Statement Fabric	1/12" (47.00 rows per 10cm)
Mindful Tile	1/10" (39.37 rows per 10 cm)
Soil Release Technology	EcoSentry Soil Protection
Backing Material	EcoFlex Matrix
Flammability	ASTM E 648 - Class 1 (Glue Down)
Smoke Density	ASTM E 662 - Less than 450
Static Propensity	AATCC - 134 Under 3.5 KV

## SUSTAINABILITY

Certification	Declare Red List Free
Indoor Air Quality	Green Label Plus Certified # 100055

## SERVICE

Warranties	10 Year Limited Wear Warranty, 10 Year Limited Static Protection, 10 Year Stain Resistance Warranty, 10 Year Limited Colorfastness to Light, 10 Year Limited Colrofastness to Atmospheric Contaminants
------------	--

Mohawk Group warrants its adhesives for the life of the original installation only when a Mohawk Group style (product) is installed. Mohawk's floor preparation procedures must be followed to ensure that the substrate has been prepared properly. Failure to use Mohawk Group adhesives or to follow Mohawk's floor preparation procedures will void all lifetime adhesive warranties. Please contact your local Sales Representative for installation guidelines.

**These patterns contain inherent characteristics which may result in pattern run off and/or pattern appearance variations at the seams or tile edges (darker or lighter pattern lines). These characteristics are inherent in the patterns and are not manufacturing defects. Consideration to these characteristics should be given when selecting an installation method.**

Chair pads are recommended under office chairs with roller casters to preserve appearance retention, act as a deterrent toward delamination and to prevent premature or accelerated wear. Walk-off tiles from the Tuff Stuff II Collection are recommended at entryways to reduce soiling.

Mohawk Group is providing this architect folder for the purpose of promoting our commercial business. This folder and its samples shall remain the property of Mohawk Group. Color may vary from dye lot to dye lot. Substitution of material may be made due to improved technology, supply limitations or other factors. The performance of this product is not affected by such variations.

For current and complete specifications please visit [www.mohawkgroup.com](http://www.mohawkgroup.com)



