



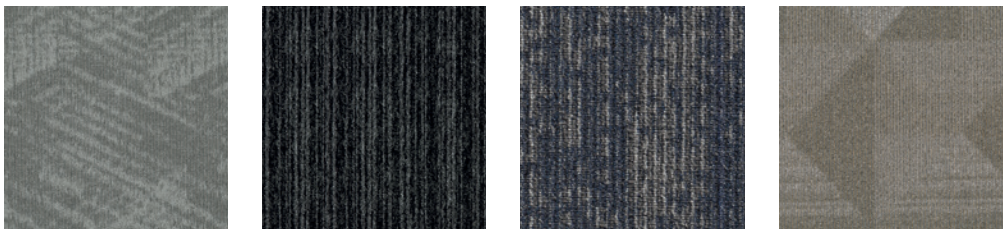
Max Service Tile

Draft Point Creative Spark Academic View Enlivened Framed Structure



Max Service is a suite of collections featuring some of our most popular patterns, carefully curated into a range of coordinating color palettes. Each collection features a different combination of fiber and backing to fit your performance conditions and budget.

These color palettes are shown with coordinating Quickship hard surface options to meet all of your application needs. All styles are available to ship within 10 business days or less so that you can complete your project with ease and confidence.





Cover: Creative Spark 989 Carbon, Draft Point 959 Pewter (Brick Ashlar Installation)



Draft Point & Creative Spark

Size: 24" x 24"

Fiber Type: Colorstrand SD

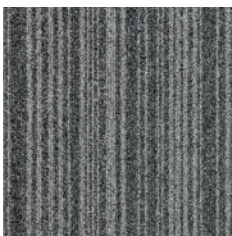
Dye Method: Solution Dyed

Backing: EcoFlex Matrix

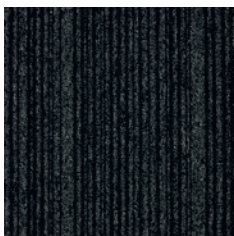
MAX SERVICE COLORWAYS



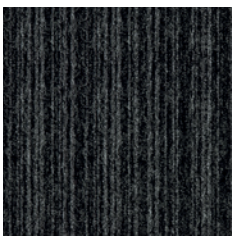
Draft Point
847 Sand



Draft Point
959 Pewter



Draft Point
979 Iron



Draft Point
989 Jet



Creative Spark
989 Carbon



Creative Spark
743 Coffee



Creative Spark
928 Mushroom

Cover: Creative Spark 989 Carbon, Draft Point 959 Pewter





Draft Point 959 Pewter (Brick Ashlar Installation)



Academic View

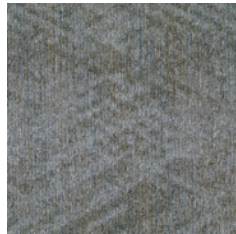
Size: 24" x 24"

Fiber Type: Colorstrand SD

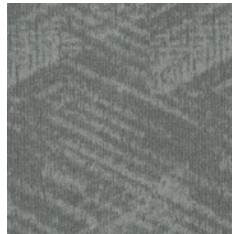
Dye Method: Solution Dyed

Backing: EcoFlex Matrix

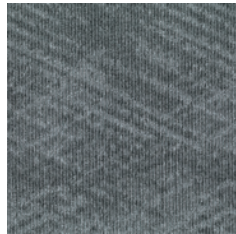
MAX SERVICE COLORWAYS



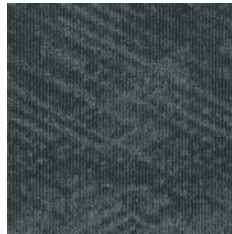
958 Ecu



924 Platinum



959 Slate



989 Charcoal







Enlivened

Size: 24" x 24"

Fiber Type: Colorstrand SD

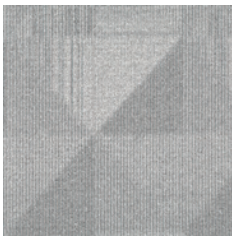
Dye Method: Solution Dyed

Backing: EcoFlex Matrix

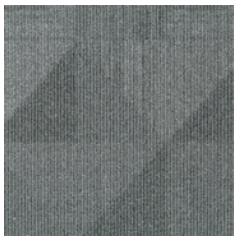
MAX SERVICE COLORWAYS



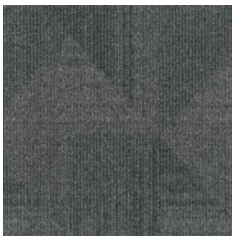
958 Ecrú



924 Platinum



959 Slate



989 Charcoal







Framed Structure

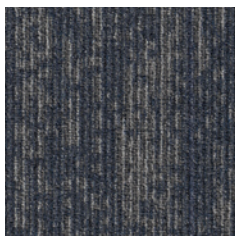
Size: 24" x 24"

Fiber Type: Colorstrand SD

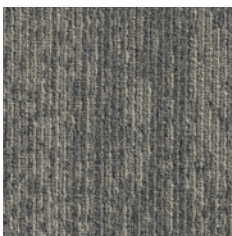
Dye Method: Solution Dyed

Backing: EcoFlex Matrix

MAX SERVICE COLORWAYS



593 Navy Gray



937 Steel



989 Charcoal



979 Pencil Lead





Framed Structure 979 Pencil Lead (Brick Ashlar Installation)



Living Local

COORDINATING GLUE DOWN LVT

Living Local Wood celebrates the vibrant spirit of our local communities. Proudly manufactured in the US, the collection draws inspiration from natural wood visuals and features colors ranging from rich, warm browns to cool grays. The aesthetically flexible shades and textures are designed to fit any interior, providing a core collection of LVT styles that you can use to bring homegrown appeal to a wide variety of projects.



PERFORMANCE

Living Local LVT features M-Force™ defense technology providing exceptional scratch, puncture and stain resistance for lasting beauty.



EASY TO CLEAN

M-Force™ finish provides greater stain and soil protection, offering a flooring solution that is easy to clean and maintain.



MADE IN THE USA

Living Local LVT is made in our US resilient facility, offering industry-leading serviceability and supporting our local economies.



Living Local Wood 958 Two Tone

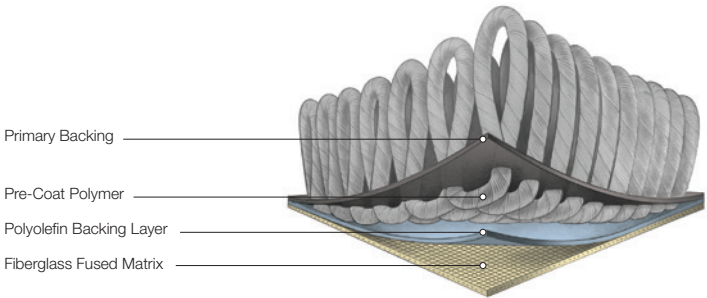
Colorstrand FIBER

For over 15 years, Colorstrand fiber has continually exceeded the demanding expectations of our customers for their projects. With the design flexibility and color intensity of solution dyed fiber, Colorstrand delivers lasting beauty and value. And, Colorstrand has the added benefit of third party SCS Global Services certified 30% recycled content.



EcoFlex Matrix SUSTAINABLE CARPET TILE BACKING

Mohawk Group continues its dedication to sustainable solutions with EcoFlex Matrix, the next generation in carpet tile backing. Using advanced materials and patent pending engineering, EcoFlex Matrix lowers environmental impact without sacrificing performance. EcoFlex Matrix simplifies floor preparation and installation, greatly reduces sub-floor moisture concerns, and is easier to ship and handle.





Elemental Edges

FINISHING ACCESSORIES

At Mohawk Group we believe in providing project solutions that are easy to select and readily available. Elemental Edges is a complete portfolio of free-to-ship accessories for all your flooring installation and finishing needs. The program is offered in 14 QuickShip colors that coordinate perfectly with our full suite of soft and hard surface products.

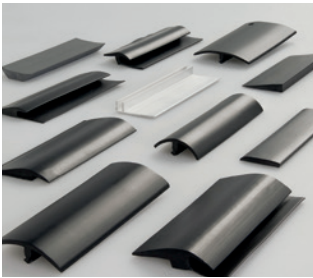


Wall Base

Seamlessly coordinate your wall base and Mohawk Group floor covering from our variety of QuickShip wall base offerings.

AVAILABLE IN

- Rubber
- Vinyl
- 4" or 6" in height
- Coved or straight
- 4' lengths or 96' & 120' rolls
- 1/8" gauge
- .080" gauge (4" Cove vinyl)

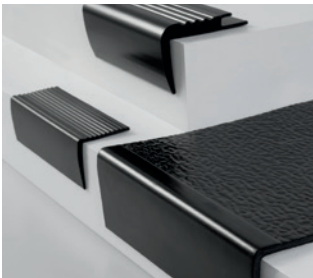


Installation Accessories

Add a functional finishing touch to your coordinated color scheme with Mohawk Group installation accessories. Proprietary Rubber formulations are shrink and crack-proof, and won't fade, even in direct sunlight.

CHOOSE FROM

- Universal Transitions
- Reducers
- Cove Stick
- Adaptors
- Stair Solutions



Stair Solutions

Specify 12.5" regular tread or 20" integrated tread/riser, available in 48" and 72" lengths. Round and hammered finishes are available with standard square nose. All profiles are available with or without visually impaired strips.

CHOOSE FROM

- Stair Treads
- Resilient Landing Tiles
- Risers
- Nosings

Specifications

Academic View QB433, Enlivened QB455, Draft Point QB427
Creative Spark QB426 / QB579 / QB580, Framed Structure QB436

DESIGN

| | |
|----------------------------------|--|
| Size | 24" x 24" (.6096m x .6096m) |
| Surface Appearance | |
| Academic View | Textured Multi-Colored Loop |
| Enlivened, Framed Structure | Textured Patterned Loop |
| Draft Point, Creative Spark | Level Patterned Loop |
| Fiber Type | Colorstrand® Nylon |
| Dye Method | Solution Dyed |
| Installation Methods | |
| Academic View, Enlivened | Quarter Turn / Vertical Ashlar / Brick Ashlar / Monolithic / Multi-Directional |
| Creative Spark, Framed Structure | |
| Draft Point | Quarter Turn / Brick Ashlar |
| Colors Available | |
| Academic View, Enlivened | 4 |
| Framed Structure, Draft Point | |
| Creative Spark | 3 |

PERFORMANCE

| | |
|-----------------------------|----------------------------------|
| Construction | Tufted |
| Gauge | |
| Academic View, Enlivened | 1/12" (47.00 rows per 10cm) |
| Framed Structure | |
| Draft Point, Creative Spark | 1/10" (39.37 rows per 10 cm) |
| Stain Release Technology | EcoSentry Plus Stain Protection |
| Soil Release Technology | EcoSentry Soil Protection |
| Backing Material | EcoFlex Matrix |
| Flammability | ASTM E 648 - Class 1 (Glue Down) |
| Smoke Density | ASTM E 662 - Less than 450 |
| Static Propensity | AATCC - 134 Under 3.5 KV |

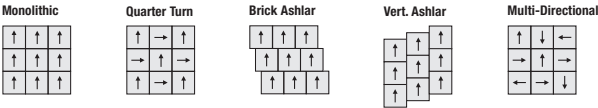
SUSTAINABILITY

| | |
|--------------------|-----------------------------------|
| Certification | Declare Red List Free |
| Indoor Air Quality | Green Label Plus Certified # 1171 |
| NSF 140 | Gold |

SERVICE

| | |
|------------|--|
| Warranties | Lifetime Limited Carpet Tile Warranty, Lifetime Limited Colorfastness to Light, 10 Year Limited Colorfastness to Atmospheric Contaminants, 10 Year Stain Warranty, Lifetime Static |
|------------|--|

Installation Instructions:



Mohawk Group warrants its adhesives for the life of the original installation only when a Mohawk Group style (product) is installed. Mohawk's floor preparation procedures must be followed to ensure that the substrate has been prepared properly. Failure to use Mohawk Group adhesives or to follow Mohawk's floor preparation procedures will void all lifetime adhesive warranties. Please contact your local Sales Representative for installation guidelines.

These patterns contain inherent characteristics which may result in pattern run off and/or pattern appearance variations at the seams or tile edges (darker or lighter pattern lines). These characteristics are inherent in the patterns and are not manufacturing defects. Consideration to these characteristics should be given when selecting an installation method.

Chair pads are recommended under office chairs with roller casters to preserve appearance retention, act as a deterrent toward delamination and to prevent premature or accelerated wear. Walk-off tiles from the Tuff Stuff II Collection are recommended at entryways to reduce soiling.

Mohawk Group is providing this architect folder for the purpose of promoting our commercial business. This folder and its samples shall remain the property of Mohawk Group. Color may vary from dye lot to dye lot. Substitution of material may be made due to improved technology, supply limitations or other factors. The performance of this product is not affected by such variations.

For current and complete specifications please visit www.mohawkgroup.com



